



## **SPRINGPOLE PROJECT COMMUNITY UPDATE BULLETIN**

### **LAND ACKNOWLEDGEMENT**

*First Minnig Gold is privileged to work on both Treaty 3 & 9 lands, the traditional territory of Ojibway and Chippewa in the District of Kenora.*

### **2024 Environmental Baseline Data Collection Programs**

First Mining Gold Corp. (FMG) has proposed to develop an open pit mine with supporting facilities known as the Springpole Gold Project (the Project). Baseline environmental work has been ongoing for the proposed Project for several years to understand the existing conditions and additional studies are underway to gather supplemental data that will be used to further support long-term monitoring. This Bulletin describes the environmental monitoring programs that FMG is carrying out in 2024, with the locations shown on the attached maps.

#### **Surface Water Quality**



Surface water sampling will be collected at established locations within Springpole Lake & outflow area, Birch Lake, Cromarty Lake, Dole Lake, and several small inland waterbodies (Figure 1). In general, surface water sampling includes:

- Analyses for the standard suite of general parameters, nutrients, anions, and total and dissolved metals.
- Ultra-low mercury and methyl-mercury analyses for key sites.
- Multi-season physicochemical profile measurements and laboratory water quality sample collection within deep basins of Birch Lake, Springpole Lake, and the southeast arm of Springpole Lake.

#### **Hydrology**

The hydrology field program includes monitoring of flow and lake levels at twelve (12) existing monitoring stations (Figure 2).

#### **Groundwater (Hydrogeology)**

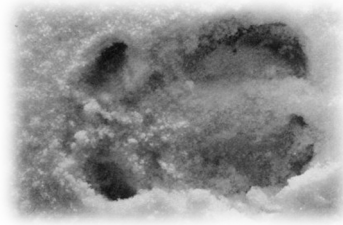
Groundwater sampling will occur at specific locations near the Project site (Figure 3). The samples will be analyzed for various water quality parameters identified in the field and through lab analysis. Testing and sampling will include:

- Multi-level monitoring wells have been installed or identified in the bedrock and overburden (where present) around the proposed Co-Disposal Facility and stockpiles.
- Groundwater samples will be collected using standard sampling techniques from the fifteen (15) monitoring well locations.



## Caribou

Early in 2024, FMG will continue the ongoing caribou study in the regional study area around the Springpole site (Figure 4). The study began in 2023 as required by the Ministry of the Environment, Conservation and Parks, and involved an aerial survey by helicopter, followed by a caribou collaring program, resulting in 50 caribou being fitted with GPS satellite collars that are programmed to drop from the animals in 4 years. In 2024 an aerial survey will be undertaken to identify important seasonal habitat areas and how caribou use their home range, in order to gather data to support species conservation and mitigation strategies.



## Wolverine

Following a successful study in 2023, a similar wolverine study will commence in February. The study involves the placement of 25 non-invasive hair snag and camera monitoring stations in the local study area around the Springpole site (Figure 5). The intent of the study is to develop an understanding of Wolverine use of the landscape relative to the proposed Springpole project. The stations involve erecting a run pole that is affixed to a sturdy tree. On the run pole there are two upright structures – the first holds 12 alligator clips intended to grab a small amount of fur, and release easily upon contact by wildlife passing through the frame. Fur samples collected are sent to a lab for genetic analysis. The second upright structure serves as a platform for the front legs of the target Wolverine to access the hanging bait. This orientation is intended to expose the underside of the Wolverine to be captured by the camera which will provide data for individual identification, classification, and reproductive status. The stations will be checked monthly to collect hair samples, refurbish cameras and to ensure the stations remain in a safe and functioning state prior to being decommissioned in May.



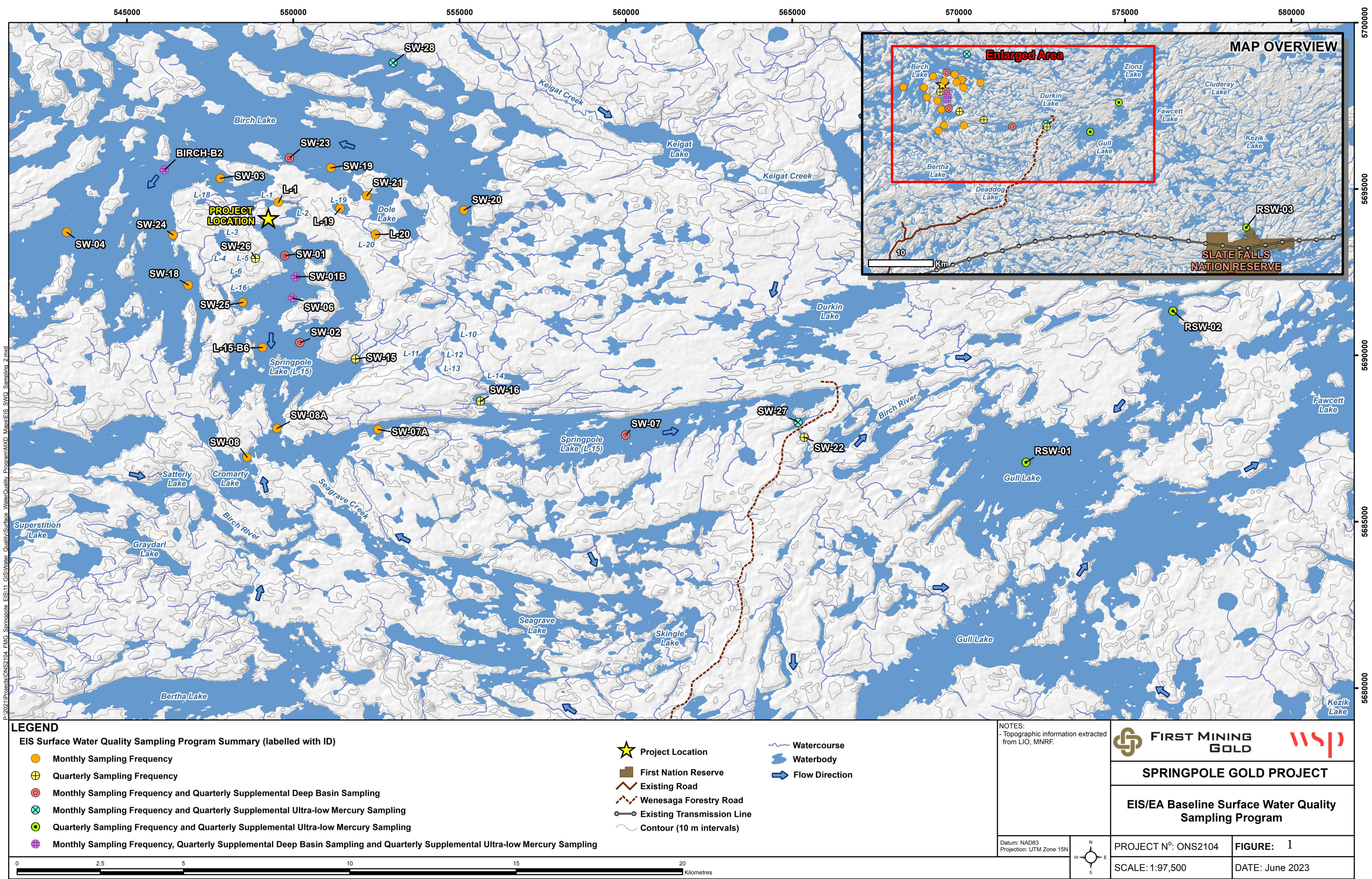
## Archaeology

Planning for the Project includes completing a comprehensive assessment of the archaeological resources present in the proposed Project area. Stage 1 and 2 archaeological assessments for the Springpole Project have been completed for the mine site area and access road and have confirmed that no further studies are required; however FMG welcomes additional traditional knowledge and/or land use information from your community members to see if there are additional areas of interest that require study.

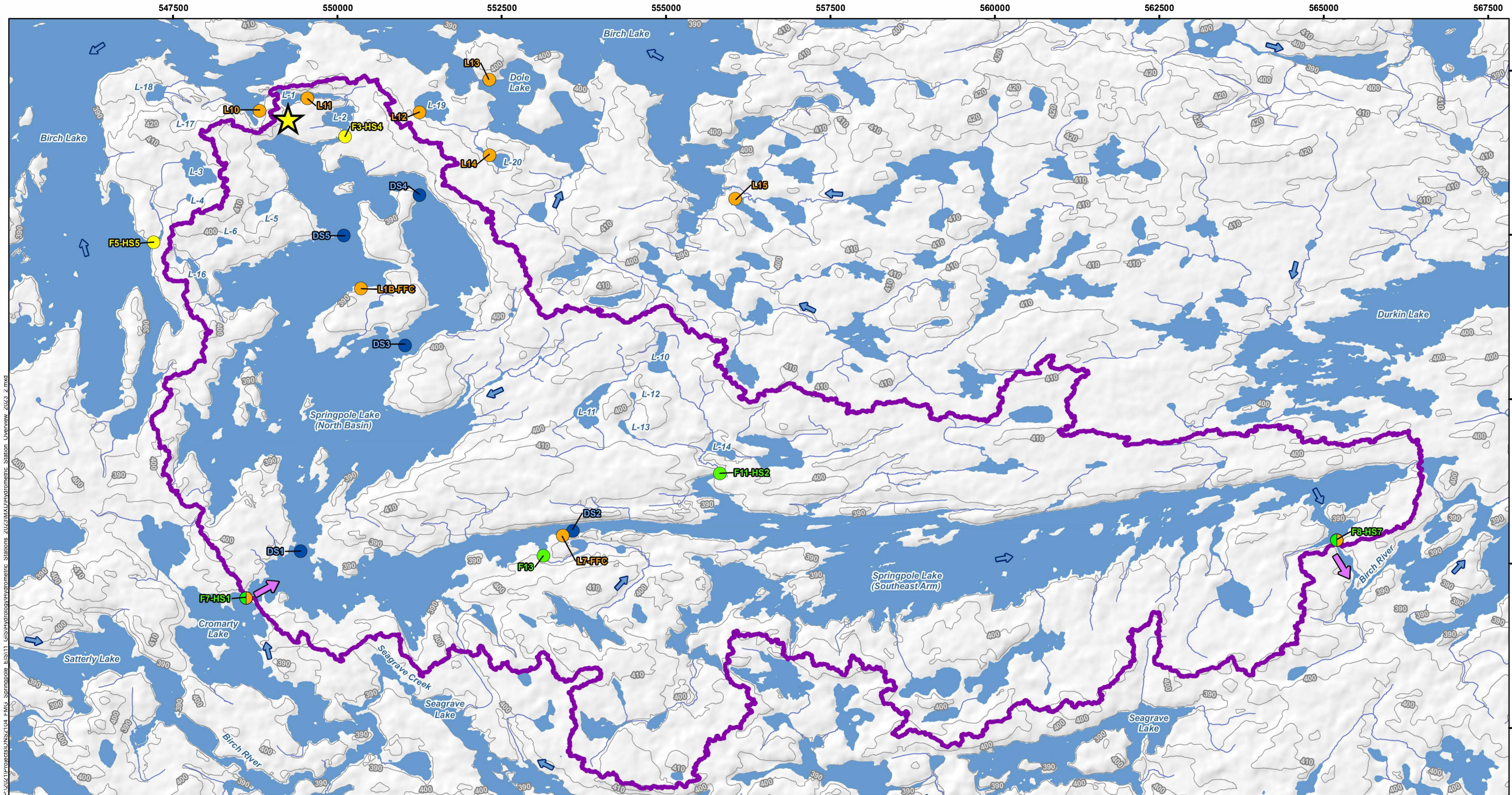


**First Mining Gold would like to offer the opportunity for members of your community interested in the baseline programs to participate in planning sessions or a site visit to assist during one of the water sampling events planned in 2024.**



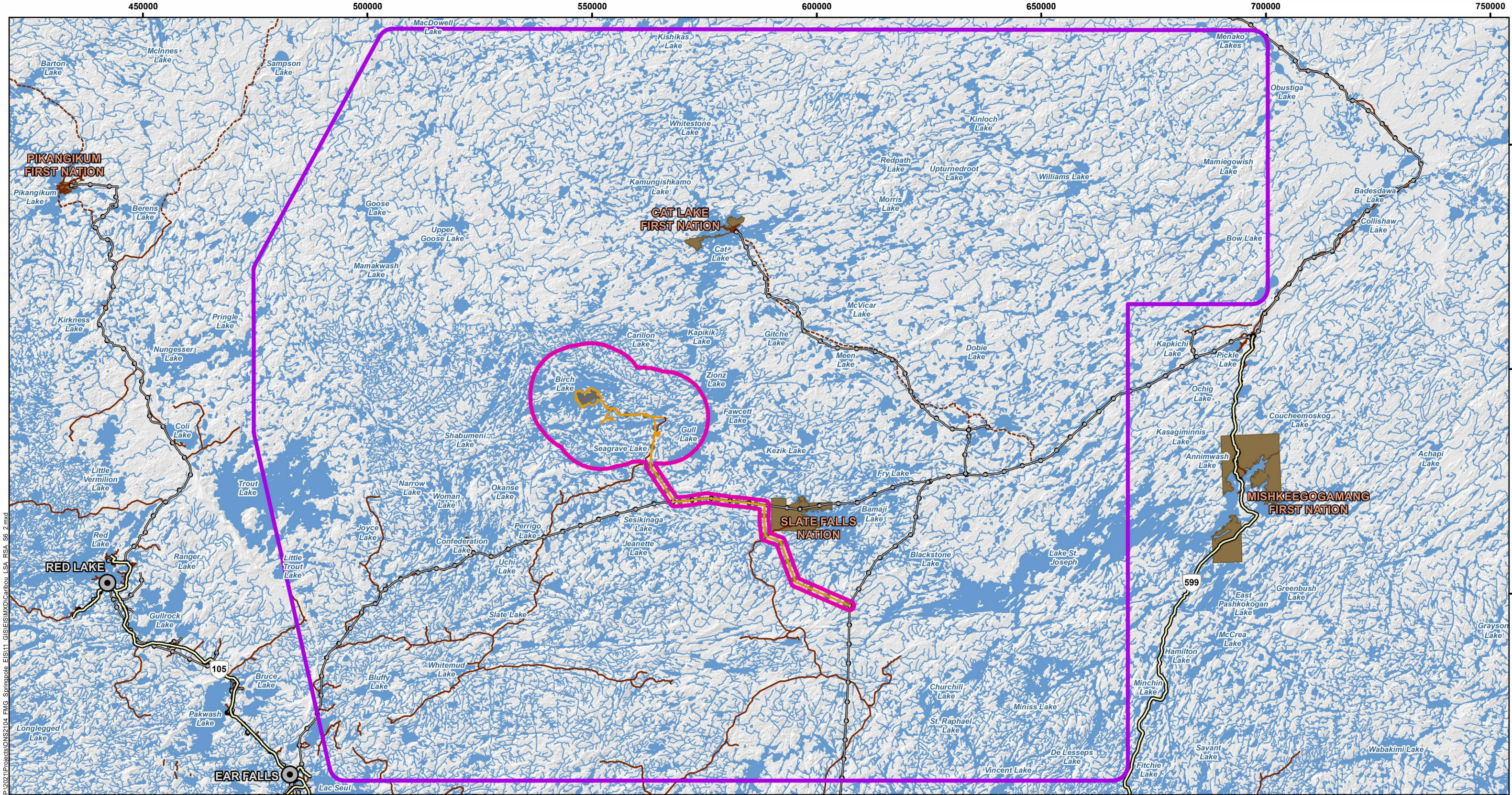






<b>LEGEND</b>		NOTES: - Topographic information extracted from LIO, MNR.		 <b>FIRST MINING GOLD</b> 	
 Project Location		 Continuous Open Channel Flow Measurement Station		SPRINGPOLE GOLD PROJECT	
 Springpole Lake Subwatershed		 Low-Flow Spot Measurement Station			
 Contour (10 m intervals)		 Continuous Lake Level Monitoring Station			
 Watercourse		 Approximate Drogue Release Point*			
 Waterbody		<p>* Drogues will be released, tracked, and collected during numerous 2023 field studies. Estimated deployment durations will range from 3-12 hrs, depending on conditions. Drogues will be deployed up to three times at each location per monitoring trip.</p>			
 Flow Direction					
 Watershed Outlet Flow Direction					
		Datum: NAD83 Projection: UTM Zone 15N			
		PROJECT N°: ONS2104		FIGURE: <b>2</b>	
		SCALE: 1:55,000		DATE: June 2023	





**LEGEND**

Proposed Mine Feature

Project Development Area

Local Study Area for Caribou (Boreal Populations)

Regional Study Area for Caribou (Boreal Populations)

First Nation Reserve

Town

Existing Highway

Existing Road

Existing Winter Road

Existing Transmission Line

Watercourse

Waterbody

**NOTES:**

- Topographic information extracted from LIO, NDMNRF.

- Proposed site plan provided by Ausenco, drawing number 105877-0000-G-001, Rev C. 29 July 2021.

- Co-Disposal Facility provided by Knight Piesold Ltd., 27 September 2021.

**FIRST MINING GOLD**

**wood.**

**SPRINGPOLE GOLD PROJECT**

**Local and Regional Study Areas for Caribou (Boreal Populations)**

Datum: NAD83  
Projection: UTM Zone 15N

PROJECT N°: ONS2104

SCALE: 1:805,000

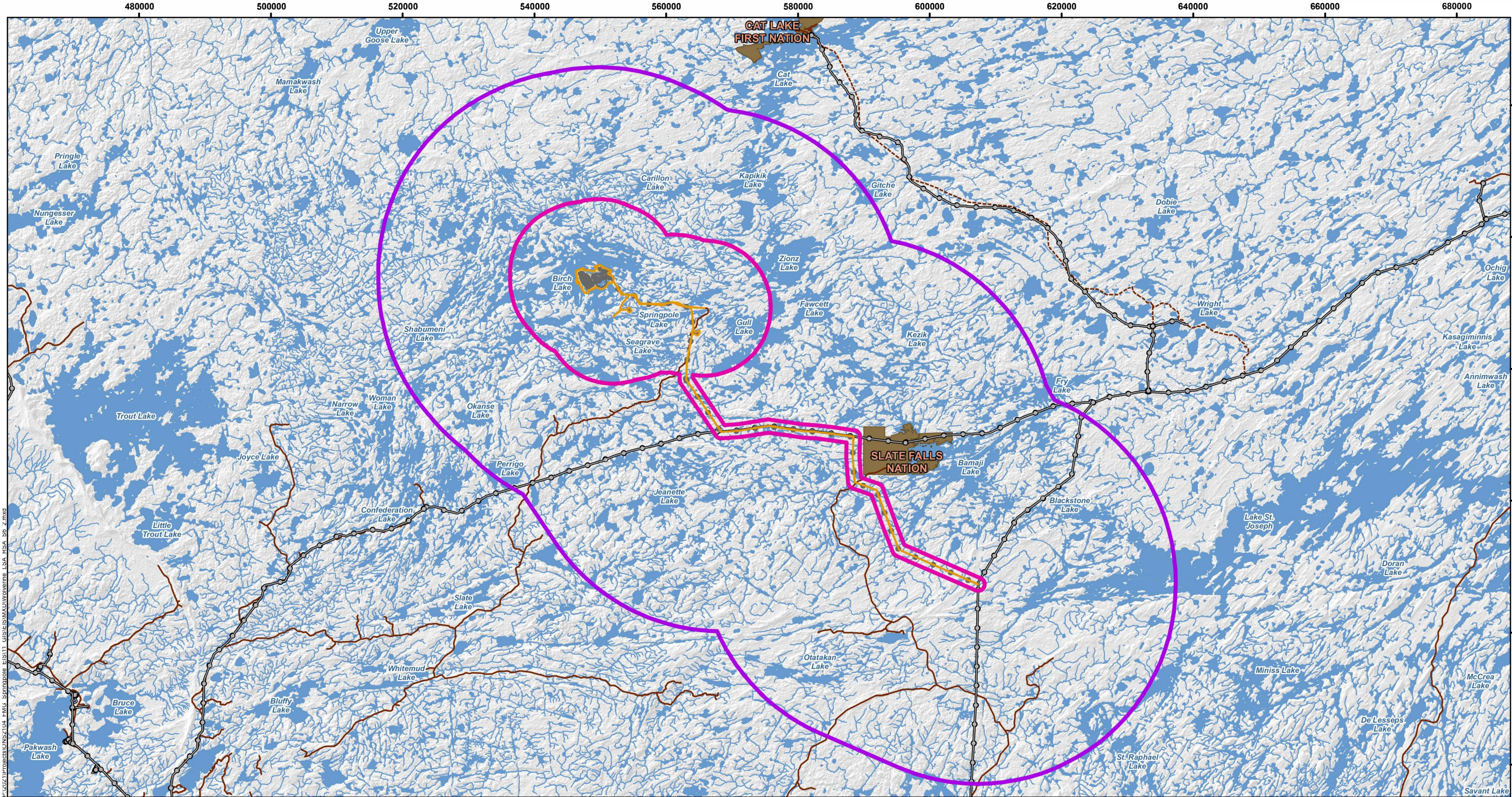
FIGURE: 4

DATE: April 2022

01020406080100

Kilometres





P:\2021\PROJECTS\ONS2104 FMG Springpole EIS\11 GIS\GISMX\Wolverine\_LSA\_KSA\_S9\_2.mxd

<b>LEGEND</b>		<b>NOTES:</b> - Topographic information extracted from LIO, NDMNRF. - Proposed site plan provided by Ausenco, drawing number 105877-0000-G-001, Rev C. 29 July 2021. - Co-Disposal Facility provided by Knight Piesold Ltd., 27 September 2021.		 <b>FIRST MINING GOLD wood.</b>			
						<b>SPRINGPOLE GOLD PROJECT</b>	
 Proposed Mine Feature		 Existing Road		 Datum: NAD83 Projection: UTM Zone 15N			
 Project Development Area		 Existing Winter Road					
 Local Study Area for Wolverine		 Existing Transmission Line					
 Regional Study Area for Wolverine		 Watercourse					
 First Nation Reserve		 Waterbody		<b>Local and Regional Study Areas for Wolverine</b>			
				PROJECT N°: ONS2104		FIGURE: 5	
				SCALE: 1:550,000		DATE: April 2022	